

Competition Entries - Part III

[| Print |](#)

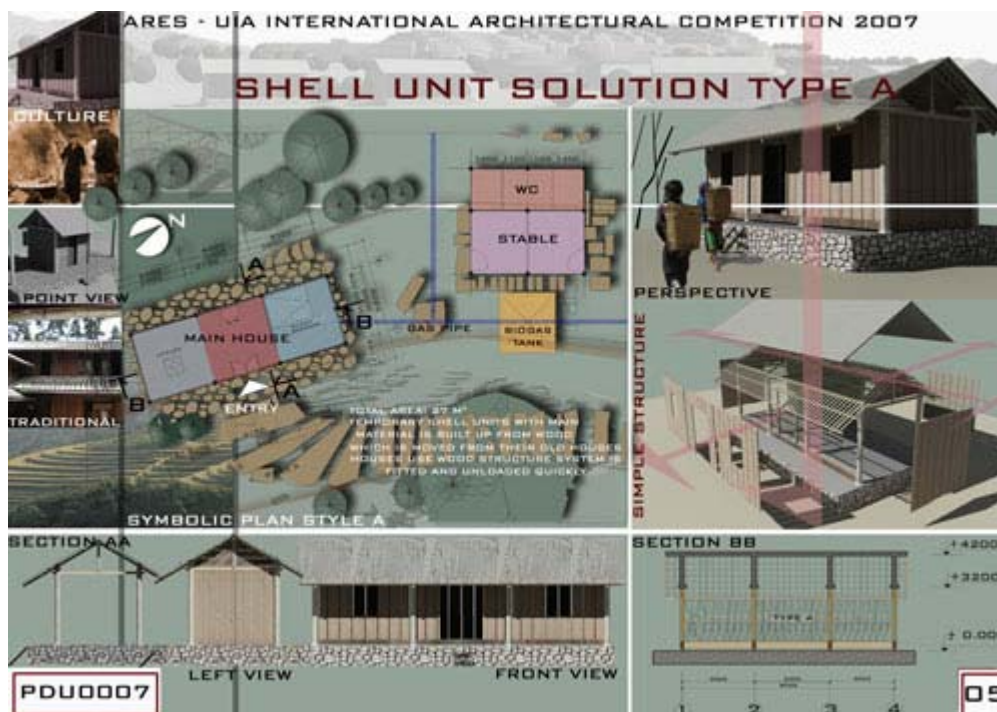
538 - SHE1133



539 - BA2003



540 - PDU0007



542 - DDU2007**544 - KY0103**

KY0103

3

545 - HAU6869

Architects: Nguyen Viet Anh
 Nguyen Phan Hung
 Le Vu Cuong
 Tran Dinh Quang
 Truong Minh Quang
 Ta Quoc Thang
 Ta Binh

Vu Thi Ngoc Anh



546 - HLP2010



547 - KAL2468



THE ADAPTABLE TEMPORARY / PERMANENT SHELTER + THE SUSTAINABLE SETTLEMENT






KAL2468 1

548 - AA0701

AA0701 LINDI PERSPECTIVE VIEW 1

549 - MNW2007

Dyna-Green Emergen



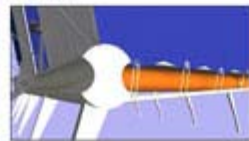
1

550 - PIP2232

THE INTEGRATED LIGHTWEIGHT DISASTER SHELTER (ILDS)



THE PROPOSED SHELTER IS A TEMPORARY, LIGHTWEIGHT, AND EROSION-RESISTANT STRUCTURE WITH A HIGH DEGREE OF FLEXIBILITY. ITS SUSTAINABLE LOW-ENERGY DESIGN ALLOWS FOR A FINE-TUNED RESPONSE TO THE LOCAL NEIGHBORHOOD CONDITION. IT CAN BE QUICKLY DEPLOYED TO AREAS STRUCK BY DISASTERS AND IS MEANT AS A FIRST ANCHOR POINT IN THE SAME LOCALS AND POTENTIALLY ON THE SAME SITES WHICH ORIGINALLY WERE USED BY FAMILIES FOR THEIR HOUSING, NOT AS A MODULAR, ISOLATED REFUGEE CAMP. THE SHELTER IS THE TEMPORARY BASE FROM WHICH FAMILIES WILL BE ABLE TO REBUILD THEIR LIVES



AND CONSTRUCT MORE PERMANENT HOUSING. THE SUPPORT INFRASTRUCTURE OF THE SHELTER (PHOTODUPLICATION SHEETS, WATER SUPPLY, STRUCTURAL ELEMENTS) MAY VERY WELL BE TRANSFERRED INTO THE RECONSTRUCTED PERMANENT DWELLINGS.



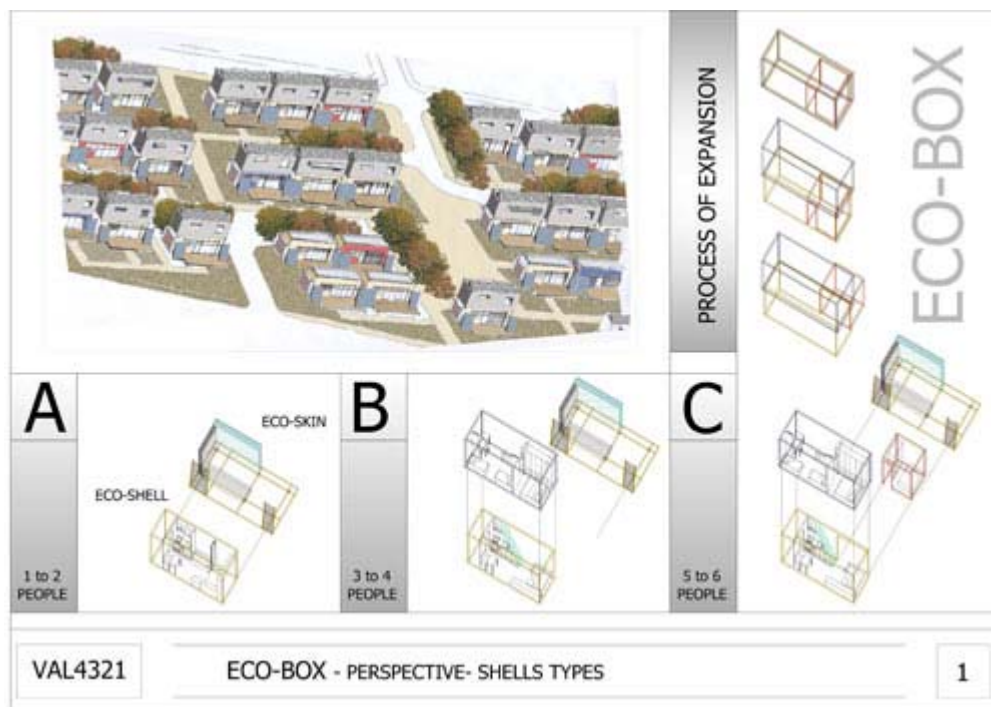
1

PIP 2232

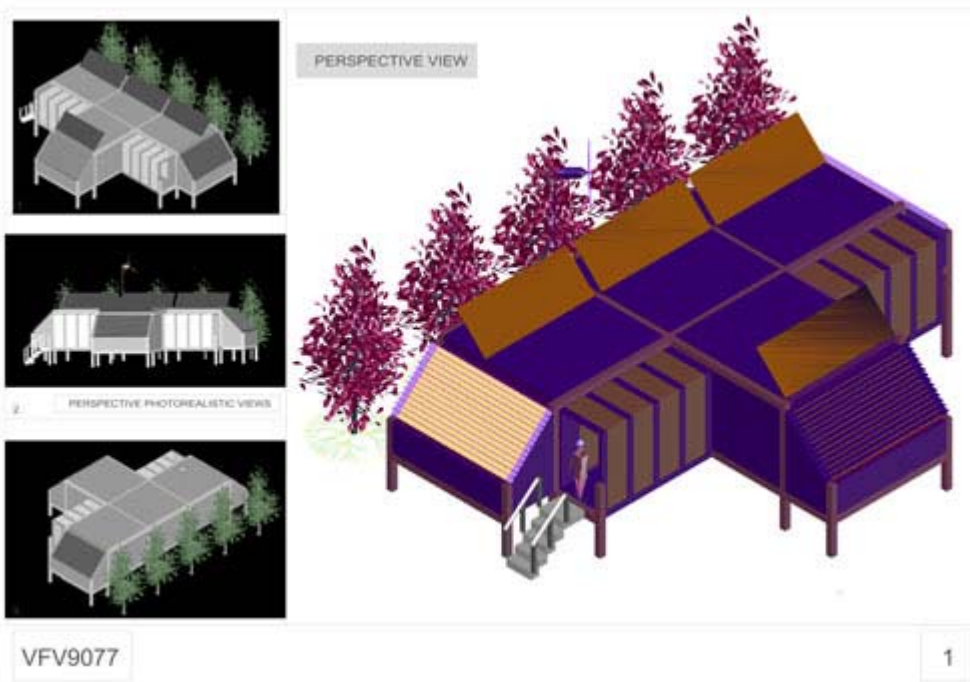
551 - LOC1519



552 - VAL4321



553 - VFV9077



Close Window